

Impacts of COVID-19 on Schools & Distance Learning for 2020-2021

San Francisco Health Commission

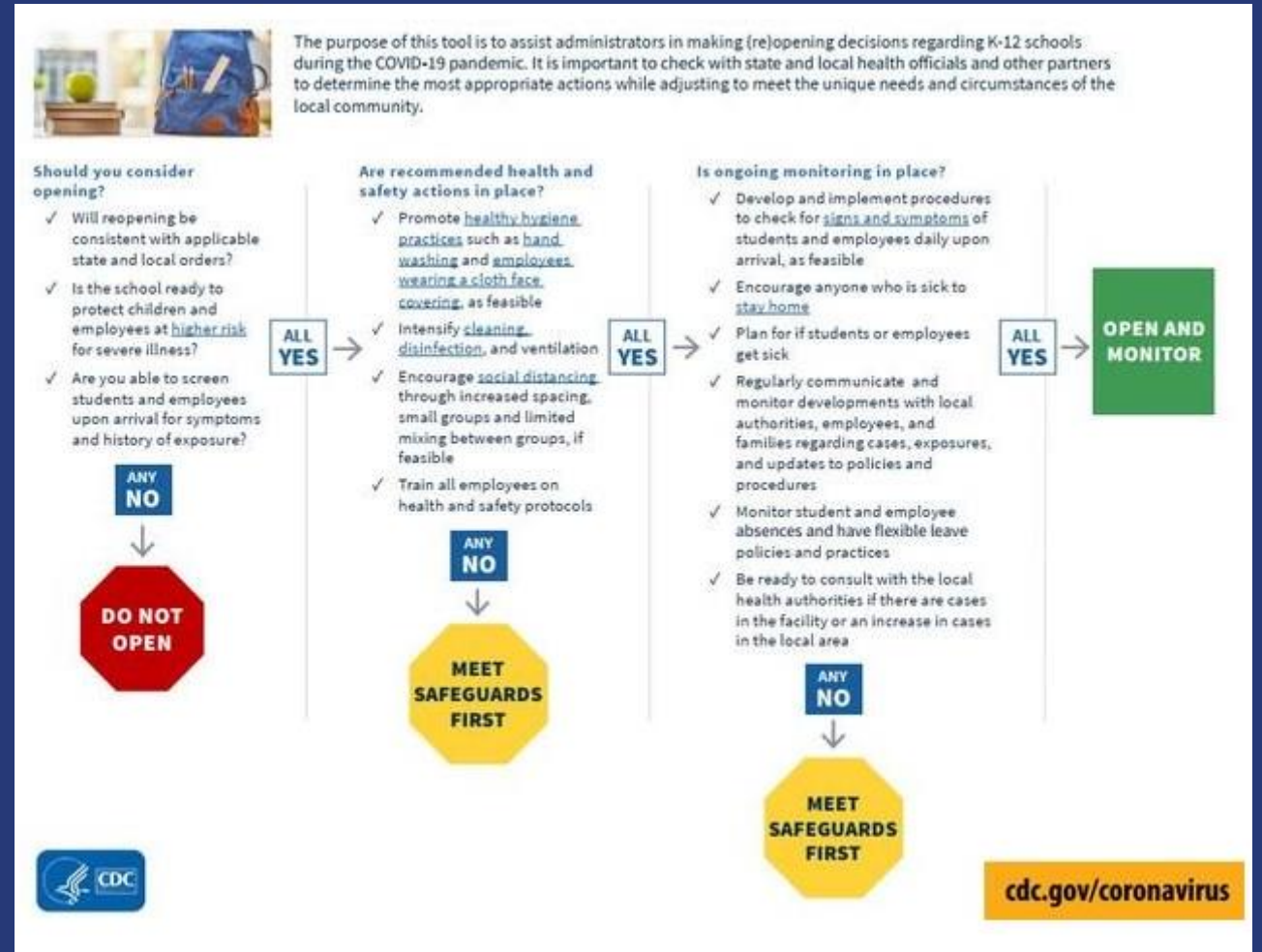
September 1, 2020



San Francisco Department of
Public Health

Safer Reopening for K-12 Schools

- Minimum health and safety standards must be met for reopening schools
- Baseline criteria developed to serve as basis for reopening schools
- School reopening criteria as evidence of low community transmission:
 - State watch list status
 - Health Indicators



Safer Reopening of schools (cont)

- SFDPH, CDPH, and CalOSHA Guidance for Schools and School-Based Programs require elementary school reopening plans to address the following, which will serve as basis for San Francisco reopening:
 - Cleaning and disinfection
 - Small, stable, cohorting
 - Entrance, egress, and movement within the school
 - Face coverings and other essential protective gear
 - Health screenings for students and staff
 - Health hygiene practices
 - Identification and tracing of contacts
 - Physical distancing
 - Staff training and family education
 - Testing of students and staff
 - Triggers for switching to distance learning
 - Communication plans



**San Francisco
Department of Public Health**

Guidance

Reopening TK-12 Schools for In-Person, On-Site Instruction
Preliminary Guidance for School Year 2020-2021

August 10, 2020

The following guidance was developed by the San Francisco Department of Public Health (SFDPH) for use by local schools, and will be posted at <http://www.sfdcph.org/covidschoolschildcare>.

AUDIENCE: This guidance applies to public, private and parochial TK-12 schools in San Francisco. Transitional Kindergartens (TK) that are part of preschool programs or are independent of elementary school programs should review SFDPH guidance for childcare programs.

Out of School Time Resources

- Out of School Time resources permitted by Health Officer:
 - Learning hubs – private and public
 - Recreation and care activities
 - Youth Sports – limited to small stable cohorts of physical activity outdoors



**San Francisco
Department of Public Health**

Preliminary Guidance

Preliminary Guidance for Out of School Time Programs

August 11, 2020

This Preliminary Guidance for group care facilities for school-aged children and youth—including programs that support distance learning, out of school time programs, after school programs, and youth sports programs—is intended to provide local businesses with information about the anticipated COVID-19 health and safety requirements for such programs. This guidance is subject to change and will not become final until the Health Officer releases it as final guidance in conjunction with a directive covering these programs and facilities. This guidance was developed by the San Francisco Department of Public Health (SFDPH) for local use. It will be posted at <http://www.sfcddp.org/CovidSchoolsChildcare>

Institutions of Higher Education and Adult Education Programs

- Higher Education permitted by Health Officer:
 - Outdoor classes
 - Limited Indoor classes
 - Athletics



**San Francisco
Department of Public Health**

Preliminary Guidance

**Reopening Institutions of Higher Education and Other Adult Education
Programs for In-Person Instruction
Preliminary Guidance for Academic Year 2020-2021**

UPDATED August 21, 2020

The following guidance was developed by the San Francisco Department of Public Health (SFDPH) for use by local Institutions of higher education and other adult education programs, and will be posted at <https://www.sfdcph.org/covid19>.

Recent Local Guidance & Information

- Preliminary Guidance: Institutions of Higher Education & Other Adult Education for In-Person Instruction (8/21/20)
- Health Directive (legal order) for Out of School Time providers and updates to Health Order (8/14/2020)
- Interim Guidance: Out of School Time programs (8/14/2020)
- Tip Sheet: Reducing COVID-19 Risks for Learning Pods (8/13/20)
- Preliminary Guidance: Re-opening TK-12 Schools for In-Person, On-Site Instruction (8/10/20)
- COVID-19 Health Checks for Children (8/10/20)
- When someone has suspected or confirmed COVID-19: Quick Guide for Schools, Childcares, and Programs for Children and Youth (8/10/20)
- FAQ: Contact Tracing at Schools, Childcares, and Programs for Children and Youth (8/4/2020)

<https://sfcdcp.org/CovidSchoolsChildcare>

Testing

- **Encouraging everyone to contact primary care provider to get tested**
- Testing resources available at sf.gov/find-out-about-your-covid-19-testing-options
- Also encouraging everyone to get vaccinations, including flu vaccine

